

## How to Install the SLP Helper Multicast to Unicast Proxy to run as a Service

### Problem

The SLP Unicast to Multicast Proxy workaround is used to enable Intel RAID Web Console 2 (RWC) / LSI Megaraid Storage Manager (MSM) to communicate with the SMIS management component on ESXi 5.x Host systems.

This Proxy component runs from an Administrative command prompt.

If you require email alerting or constant access to RWC 2 / MSM components, it is necessary to keep this proxy component running. Logging out from the session that contains the command prompt running the proxy will normally shut it down.

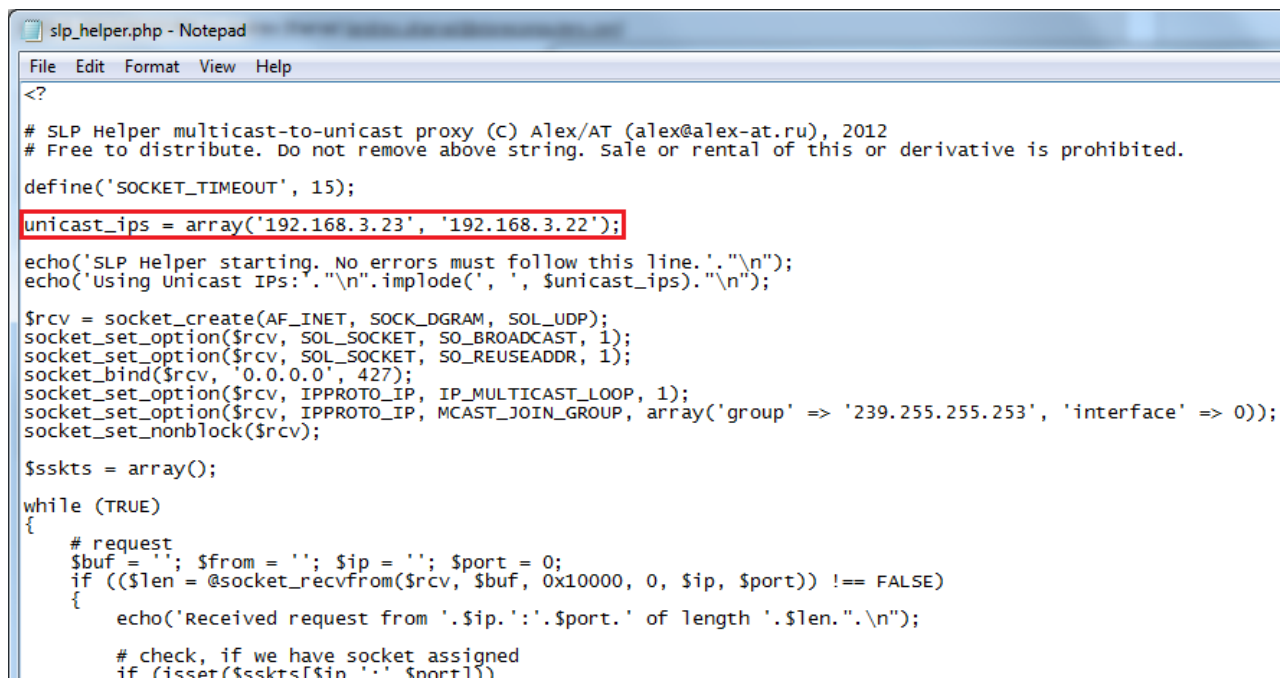
### Solution - Install SLP-Helper as a Service

The solution is to run the SLP-Helper as a service using a third party component.

**Credit:** Credit for the utility to run the SLP Helper utility as a service goes to <http://nssm.cc/>

Steps:

- Download the attached ZIP file (version 0.03, updated 21/4/2014 to update the NSSM component)
- Extract it to a folder of the Windows Server system that has RWC 2 / LSI MSM installed. For example, extract it to the `c:\slp_helper_service` folder.
- As per **Troubleshooting Step 9** of the [original article](#), edit the `slp_helper.php` file with Notepad.
- Find the line that contains `$unicast_ips = array('192.168.1.1');`
- Edit the IP address to your ESXi Host. If you need multiple IP Addresses for multiple hosts, separate them by commas. For example `$unicast_ips = array('192.168.3.23', '192.168.3.22');`



```
slp_helper.php - Notepad
File Edit Format View Help
<?
# SLP Helper multicast-to-unicast proxy (c) Alex/AT (alex@alex-at.ru), 2012
# Free to distribute. Do not remove above string. Sale or rental of this or derivative is prohibited.

define('SOCKET_TIMEOUT', 15);
unicast_ips = array('192.168.3.23', '192.168.3.22');
echo('SLP Helper starting. No errors must follow this line.'."\n");
echo('Using Unicast IPs:'. "\n".implode(' ', $unicast_ips)."\n");

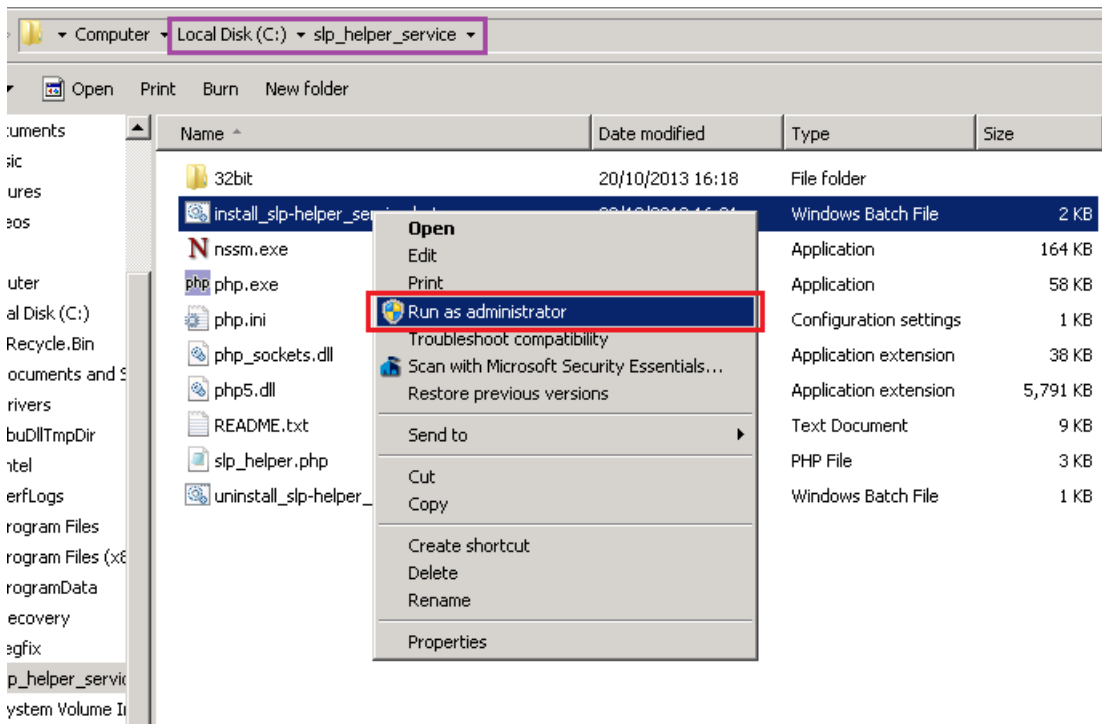
$rcv = socket_create(AF_INET, SOCK_DGRAM, SOL_UDP);
socket_set_option($rcv, SOL_SOCKET, SO_BROADCAST, 1);
socket_set_option($rcv, SOL_SOCKET, SO_REUSEADDR, 1);
socket_bind($rcv, '0.0.0.0', 427);
socket_set_option($rcv, IPPROTO_IP, IP_MULTICAST_LOOP, 1);
socket_set_option($rcv, IPPROTO_IP, MCAST_JOIN_GROUP, array('group' => '239.255.255.253', 'interface' => 0));
socket_set_nonblock($rcv);

$sskts = array();

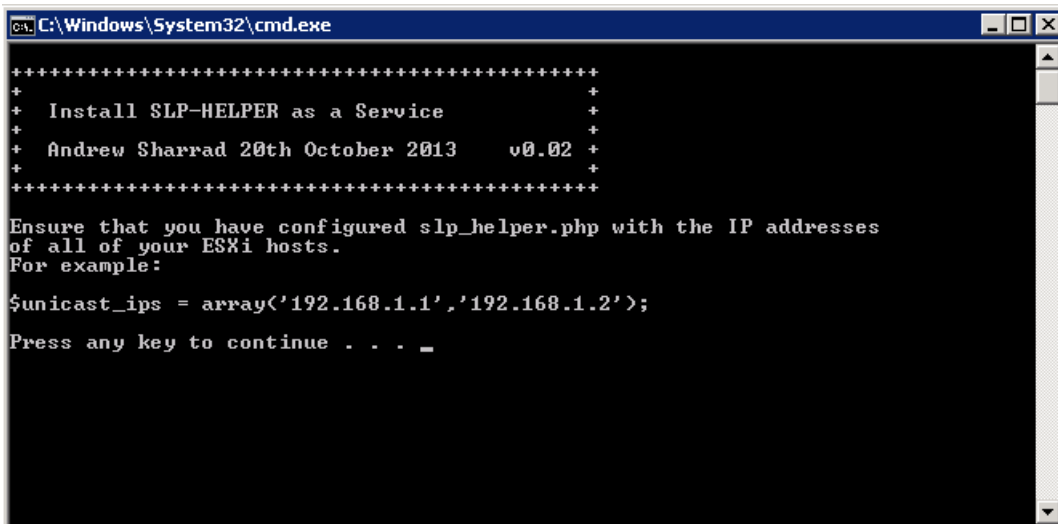
while (TRUE)
{
    # request
    $buf = ''; $from = ''; $ip = ''; $port = 0;
    if (($len = @socket_recvfrom($rcv, $buf, 0x10000, 0, $ip, $port)) != FALSE)
    {
        echo('Received request from '.$ip.':'.$port.' of length '.$len."\n");

        # check, if we have socket assigned
        if (isset($sskts[$ip.':'.$port]))
```

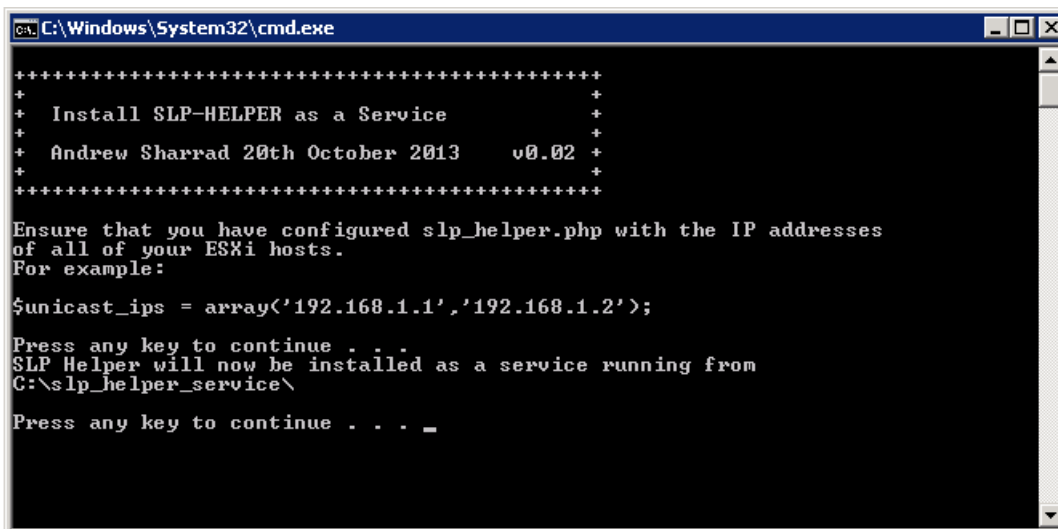
- Run `install_slp-helper_service.bat` with Administrative rights.



- This will then install the SLP\_HELPER service.



- You will be prompted again to continue, after confirmation of the source directory.



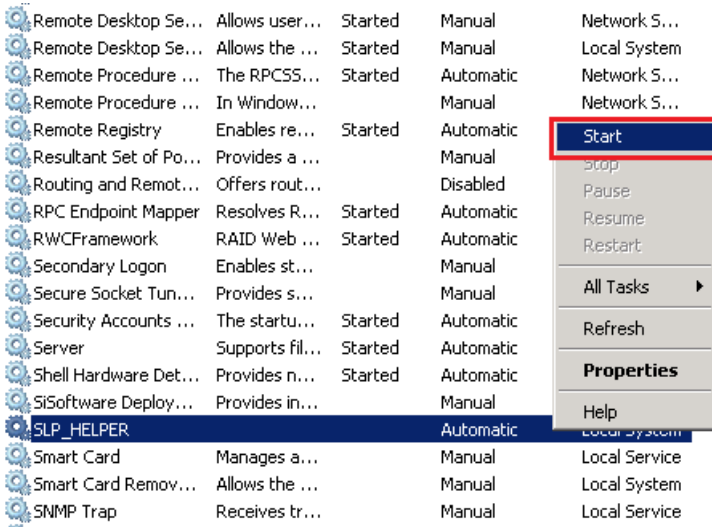
The service should be started automatically upon installation.

**Remember:** You only need one copy of SLP\_HELPER running per IP subnet or VLAN. You do not need one per host if all of your hosts are on the same subnet and VLAN. It is recommended to install SLP\_HELPER on the machine that is running the Intel RWC 2 / LSI MSM components.

## Starting and Stopping the Service

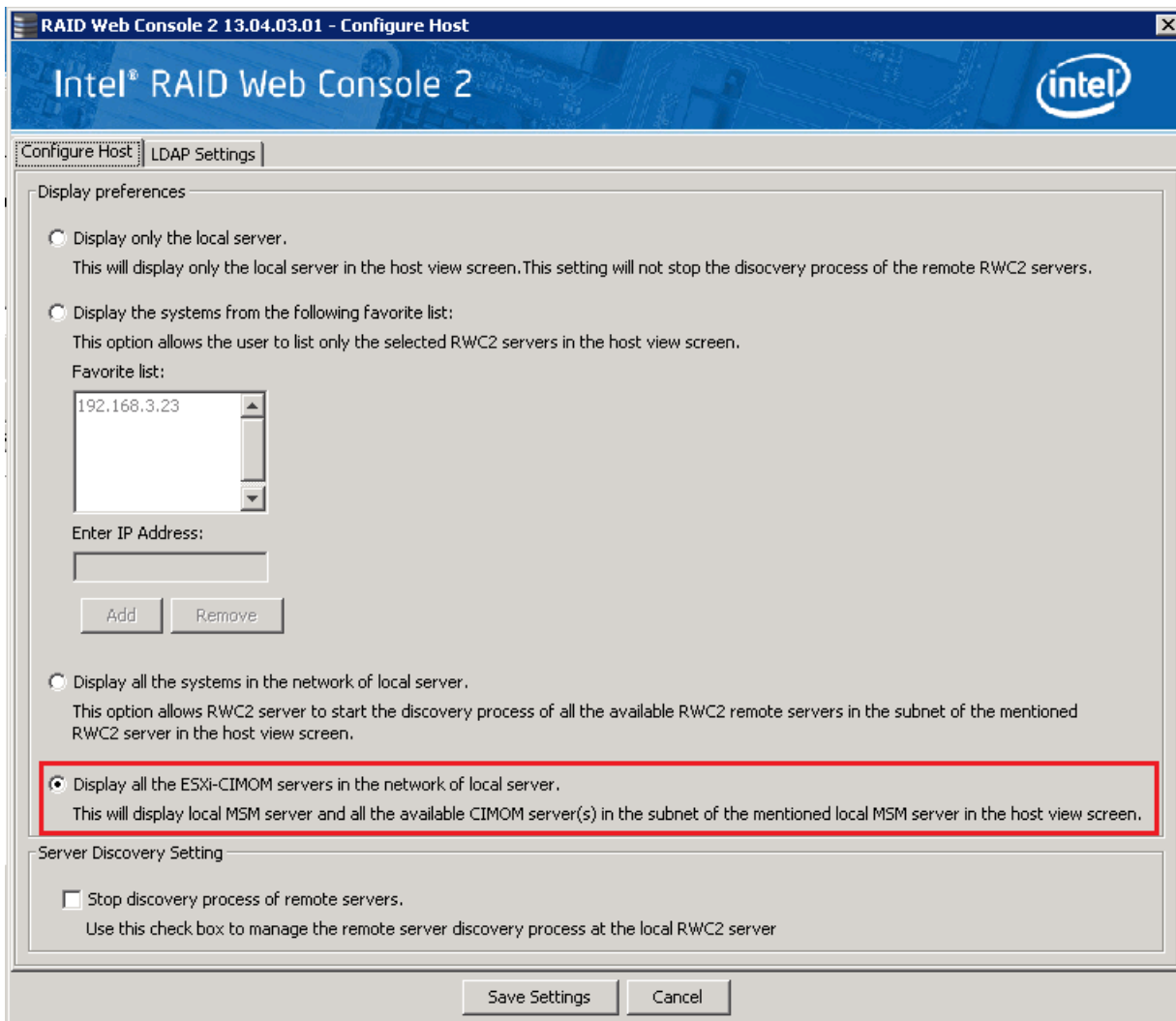
After installing SLP\_HELPER, the service should be started automatically. However to check that the service is started, or to start or stop the service manually, follow the instructions below.

- Open Computer Management, go to Configuration and then Services.
- Find the service SLP\_HELPER in the list of services.
- Right hand click on it.
- Left hand click on Start or Stop as needed.



## Testing

- Your Intel RWC 2 / LSI MSM should now be able to communicate with the ESXi Hosts. Remember to click on Configure Host and use the option to "Display all the ESXi-CIMOMservers in the network of local server."



- As a reminder, its also important to set the discovery IP address to be the IP Address of the Windows system running RWC 2 / MSM



## Uninstallation

To uninstall the service, use the `uninstall_slp-helper_service.bat` file. This will stop and remove the service.

Applies to:

- ESX 5.x Hosts running Intel / RAID Controllers with LSI MSM or Intel RWC2

---

Article ID: 199

Last updated: 20 Apr, 2014

Updated by: Andrew Sharrad

Revision: 15

Third Party Products -> VMWare Virtualisation -> Installation and Software -> How to Install the SLP Helper Multicast to Unicast Proxy to run as a Service

<https://kb.stonegroup.co.uk/index.php?View=entry&EntryID=199>