

Anti-virus and Online Safety

Internet Security

Having some form of Internet Security Software (such as Anti-Virus) to protect you and your computer or notebook is a necessity.

Windows 7

Windows 7 has security software already installed called Windows Defender, this is NOT an Anti-Virus program but an Anti-Spyware program which runs automatically when the PC / Notebook is turned on. It gives some protection from undesirable software that can be downloaded from the Internet. This program is very limited in what it can do or the overall protection it gives.

It is recommended to have a full Anti-Virus program installed - some work with Defender; some replace it. There are many different programs available, some of which are free. These include:

Avast: download [here](#).

AVG Free Edition: download [here](#).

Microsoft Security Essentials: download [here](#).

Windows 8/8.1

Windows 8.x comes with a new version of Defender installed, this is an Anti-Virus program not just an Anti-Spyware program.

It is recommended only to have one anti-virus program on your PC / notebook, otherwise the programs can start conflicting with each other and may fail to work properly, or slow your system down.

Please Note: If your Stone PC / notebook came with the Avast Pro Anti-virus pre-installed, you will have this available for version for the length of the original warranty. If you receive a message that Avast has expired and the PC / notebook is still under the original warranty please contact Stone support on 08448 22 11 22 and they will provide you with a replacement product key.

Applies to:

- Windows 7
- Windows 8.x

Preventing Accidental Purchases on Android Based Devices

Problem

In-app purchases running up large bills on the Google play store. It is not always easy to spot an in-app purchase that charges you real money rather than in-game points or credits. If you are not careful, it is easy to spend hundreds or even thousands of pounds without realising it. These bills are your responsibility and not the responsibility of the laptop or tablet manufacturer.

Cause

Many games allow purchases of extra coins, credits, points, etc. It can be difficult to track exactly how much you have spent on these point or add-ons, or how many of these you have used when you play the game.

Instructions

Method 1: Change the Google play store password behaviour

1. Open up the google play store
2. Press the Menu button (≡)
3. Go to "Settings"
4. Press "Require authentication for purchases"
5. Choose "For all purchases"
6. Enter the password you use for your Google account

Note: It is a good idea to set the password on your Google account to be a different password to the one used to switch on or unlock your device.

Method 2: Remove your credit card information from Google Play

1. On a computer go to <http://wallet.google.com>
2. Log in with your Google Account
3. Click "Payment Methods" (this will be on the left)
4. Next to your credit/debit card click "remove"

Note: This will stop ALL google play purchases without you adding another card. However you can buy pre-paid cards for the Google play store from most supermarkets, Boots, Currys, PC World, the Post Office, Amazon, and Shell Petrol stations. These will allow you to continue to make purchases on/with your Google play account but will limit any financial damage caused by accidental purchases if they are the only payment method on your account.

Applies to:

- Tablets running the Android Operating System.

What is Netintelligence?

Netintelligence is an internet parental control designed to help parents monitor and if required, restrict their children's Internet activity. It allows you to:

- Determine which types of web sites you do and do not want your family to visit.
- Keep an eye on the length of time spent on the computer by your family and what they are doing.

The following list shows the type of websites that are blocked by default. The categories can be added or removed for each user account. Gaming websites can also be added to the blocked list, but is not enabled as default.

Adult - includes Pornography, Nudity, Sexuality, Art Nudes, Naturism, Adult Goods, Dating and Personals, Adult Games, some lingerie and swimwear (if appropriate) and other subject areas to which minors' access should be restricted.

Gambling - Including commercial sites and tipping/information sites, casinos, bookmakers, and other online gambling and betting sites.

Threats - Includes Hacking, Cracking, Phishing, Proxies and Redirectors, Virus Creation, Warez, and any threats not included under other categories.

Drugs - Includes advocacy, instructional, and supply sites and associated literature.

Hate - Includes Aggression, Violence, Terrorism, some weapons, Gore, promotion of Hate, Intolerance, Prejudice or Lawlessness.

Gaming - Includes Coin-op Games, Online Games, Game-playing Groups, Puzzles, Gaming Resources, Role-playing Games, Video Games etc.

Note: Netintelligence is already installed on your PC or notebook, it is very easy to set up and use. To gain the full benefits of Netintelligence it is recommended to have separate Windows user accounts for adults and for children.

Setting up your Netintelligence Account



1. Visit the Netintelligence Account Setup website by either clicking on the Ni logo on the desktop or by using the Start menu as shown below.

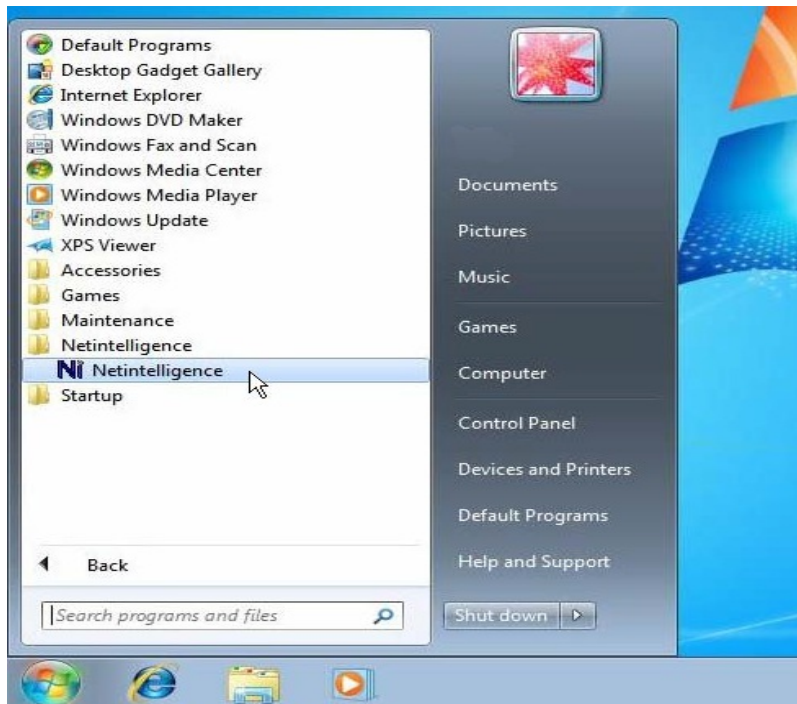


Fig 2. 'Start Menu'

2. You should now see the screen shown below.



Netintelligence is configured via a web-based Control Panel.

To access this Control Panel, you must create a username and password that you will use to control your Netintelligence account

Username * ([help](#)):

Password * ([help](#)):

Confirm Password * :

Activation Key * ([help](#)):

Email address ([help](#)):

* = required

Create account

Fig 3. Control Panel

3. Enter a **username** for your Netintelligence account; this can be anything you want, but needs to be between 5 and 30 characters long.
4. Enter a **password** for your Netintelligence account. Your password should be something that you can remember and between 5 and 15 characters long.
5. Enter your chosen password in the '**Confirm Password**' field also.
6. Enter the **Activation Key** (You will have been supplied with a sheet of A4 paper with a Netintelligence Activation Key on it), making sure that you enter the activation key exactly as you see it.
7. Enter your **email address**, if you have one. An email address is not required, but it is useful if you require assistance later.
8. Click the '**Create account**' button and a confirmation window will pop up.

Your Netintelligence account is now set up, it is pre-configured with a default set of rules **you do not need to do any other configuration**, unless you want to make changes.

Full details on how to use and configure Netintelligence can be found by clicking on the following link
http://www.netintelligence.com/pdf/netintelligence_home_quick_start_guide.pdf

Please Note: You will not be able to 'surf' the Internet using Google Chrome as it is not compatible with Netintelligence. Google Chrome should not be installed on your PC / notebook.

Applies to:

- Stone Home User systems running Windows Vista, Windows 7 or Windows 8/8.1

