

How to Use the EFI based SELVIEWER Tool

Short Instructions

1. [Download the EFI SEL Viewer](#) and extract it to a FAT32 formatted USB pen drive. Connect the pen drive to the system while it is powered off.
2. [Boot the server into the EFI Shell](#) by using the F2 key during POST to go into the BIOS and then by using the **Boot Manager** screen to access the **Internal EFI Shell**
3. Change drive to the pen drive by typing in `fs0:` and then Enter. Change to the folder that you extracted the SELVIEW program to by using the `cd` command.
4. Run the **SELVIEW** program to run the GUI or run `selview /save sn.sel` to save the event log entries to a file.
5. Send the log file to Stone support for analysis.
6. If you need to clear the SEL Log of all entries, use `selview /clear`

Detailed Instructions

These instructions involve using the EFI shell for diagnostics. This can only be performed when the operating system such as Windows or ESX is not running. If you need a Windows based tool, this is also available.

1. [Download](#) the EFI SELVIEWER tool for your motherboard or server platform.

Many downloads contain tools for EFI and Windows, in which case find the folder which references UEFI:

..			File folder		
UEFI_frusdr201_B19			File folder	19/05/2011 09:51	
UEFI_fwpiakupd402_B10			File folder	19/05/2011 09:47	
UEFI_iflash_26_Build15			File folder	19/05/2011 09:47	
UEFI_SELVIEWER_V201_B19			File folder	19/05/2011 09:47	
UEFI_SYSCFG_V501_B27			File folder	09/09/2011 01:51	
User's Guide			File folder	19/05/2011 09:47	
UEFI_Update & Configuration Utilities.doc	38,912	12,658	Microsoft Word 97...	09/09/2011 02:07	2E747634
UEFI_Update & Configuration Utilities.ht...	12,148	2,184	HTML Document	09/09/2011 02:07	D0870F30
UEFI_Update & Configuration Utilities.txt	1,944	764	Text Document	09/09/2011 02:06	AE5ADC05

2. Create a folder called SEL on a **FAT32** formatted USB pen drive
3. Copy the SEL Viewer files to the SEL folder on the USB pen drive

..			File folder		
Licenses			File folder	19/05/2011 09:47	
hrs.ini	173,774	21,358	Configuration setti...	20/05/2010 11:28	0DCD35A0
ipmi.efi	245,952	69,978	EFI File	20/05/2010 11:27	ADD2C08A
SEL.ini	285	189	Configuration setti...	20/05/2010 11:27	DF37A33E
selenus.hlp	11,860	2,502	Help file	20/05/2010 11:27	4FE69D45
selenus.str	98,356	16,209	STR File	20/05/2010 11:32	62A60091
selview.efi	610,048	187,870	EFI File	20/05/2010 11:32	7498547F
SELViewer.txt	5,628	2,334	Text Document	20/05/2010 11:27	75DBDD9A

4. [Boot the system](#) into the EFI Shell and follow the instructions to get to the `fs0:` prompt.
5. Use the `cd` command to change to the SEL directory.

```
EFI Shell version 2.00 [4096.1]
Current running mode 1.1.2
Device mapping table
fs0      :Removable HardDisk - Alias hd52g0b blk0
         Acpi (PNP0A03,0) /Pci (1D17) /Usb (6,0) /HD (Part1,Sig29B73A2D)
blk0     :Removable HardDisk - Alias hd52g0b fs0
         Acpi (PNP0A03,0) /Pci (1D17) /Usb (6,0) /HD (Part1,Sig29B73A2D)
blk1     :HardDisk - Alias (null)
         Acpi (PNP0A03,0) /Pci (1F12) /Ata (Primary,Master) /HD (Part1,SigD5BAE38B)
blk2     :HardDisk - Alias (null)
         Acpi (PNP0A03,0) /Pci (1F12) /Ata (Primary,Master) /HD (Part2,SigD5BAE38B)
blk3     :BlockDevice - Alias (null)
         Acpi (PNP0A03,0) /Pci (1F12) /Ata (Primary,Master)
blk4     :BlockDevice - Alias (null)
         Acpi (PNP0A03,0) /Pci (1F12) /Ata (Secondary,Master)
blk5     :Removable BlockDevice - Alias (null)
         Acpi (PNP0A03,0) /Pci (1D17) /Usb (6,0)
```

Press ESC in 1 seconds to skip **startup.nsh**, any other key to continue.

Shell> fs0:

fs0:\> cd sel

fs0:\SEL> _

(6. Optional - use the DIR command to list files. Executables are highlighted in bright green).

7. To run the SEL Viewer and just save the log entries to a file on the pen drive, without opening the GUI, type in:

```
selview /save sn.sel
```

And press Enter. Replace `sn.sel` with the serial number of the system.

8. To run the SEL Viewer GUI, just type in `selview` and press enter.

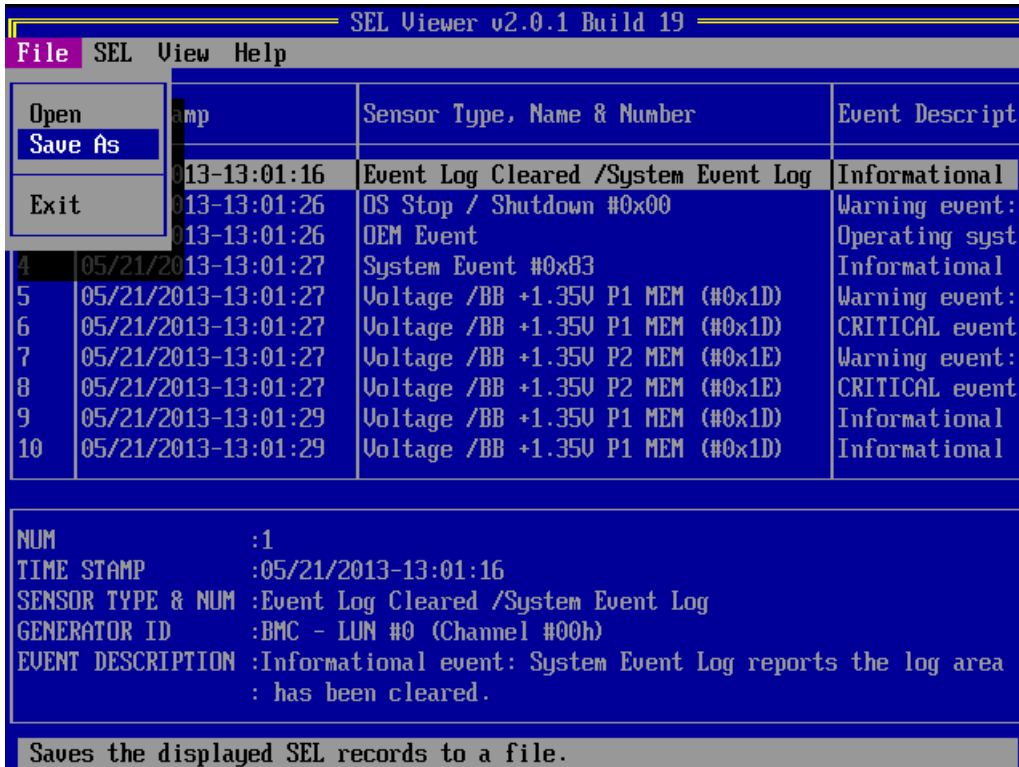
Num	Time Stamp	Sensor Type, Name & Number	Event Descript
1	05/21/2013-13:01:16	Event Log Cleared /System Event Log	Informational
2	05/21/2013-13:01:26	OS Stop / Shutdown #0x00	Warning event:
3	05/21/2013-13:01:26	OEM Event	Operating syst
4	05/21/2013-13:01:27	System Event #0x83	Informational
5	05/21/2013-13:01:27	Voltage /BB +1.35V P1 MEM (#0x1D)	Warning event:
6	05/21/2013-13:01:27	Voltage /BB +1.35V P1 MEM (#0x1D)	CRITICAL event
7	05/21/2013-13:01:27	Voltage /BB +1.35V P2 MEM (#0x1E)	Warning event:
8	05/21/2013-13:01:27	Voltage /BB +1.35V P2 MEM (#0x1E)	CRITICAL event
9	05/21/2013-13:01:29	Voltage /BB +1.35V P1 MEM (#0x1D)	Informational
10	05/21/2013-13:01:29	Voltage /BB +1.35V P1 MEM (#0x1D)	Informational

NUM	:1
TIME STAMP	:05/21/2013-13:01:16
SENSOR TYPE & NUM	:Event Log Cleared /System Event Log
GENERATOR ID	:BMC - LUN #0 (Channel #00h)
EVENT DESCRIPTION	:Informational event: System Event Log reports the log area : has been cleared.

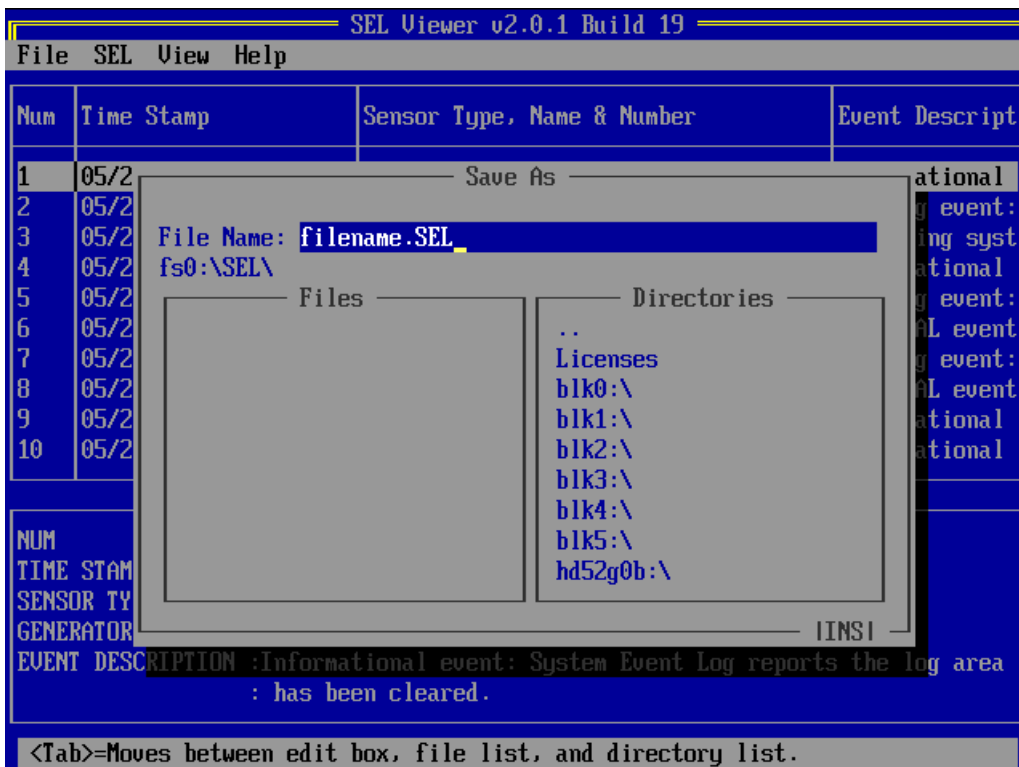
Use arrow keys and <Enter> to select from menu.

9. To save the event log to a file using the GUI, do the following:

- Press Enter to access the file menu and then use the down arrow key to highlight "Save As"



- Press Enter. You will then be asked for a filename. Give a filename and press Enter again.



10. When you have saved a copy of the SEL Log to the pen drive, reboot the system.
11. Send the SEL text file into Stone support for analysis.
12. If you need to clear the SEL Log of all entries, use `selview /clear`

Tip: In addition to the SEL Viewer utilities for EFI or Windows, the S1400, S1600, S2400 and S2600 range of boards and systems from Intel now also support the [SysInfo tool](#). The Sysinfo tool works in a very similar way but records even more information, at the cost of taking slightly longer to run.

Applies to:

- Desktop and Server systems that support SEL storage and retrieval.

Last updated: 22 Jan, 2016

Updated by: Andrew Sharrad

Revision: 18

Stone Branded Products -> Servers and Workstations -> Troubleshooting -> How to Use the EFI based SELVIEWER Tool

<https://kb.stonegroup.co.uk/index.php?View=entry&EntryID=114>